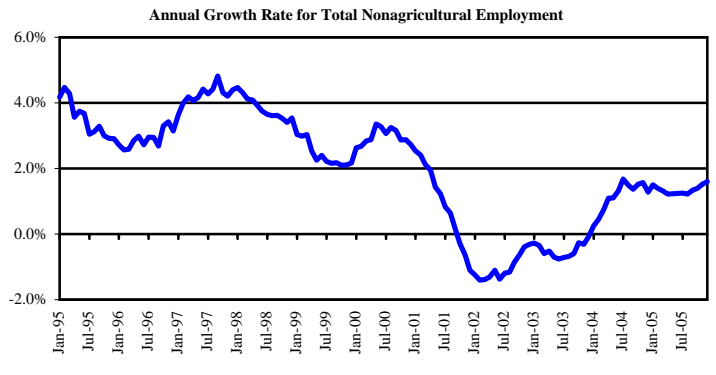
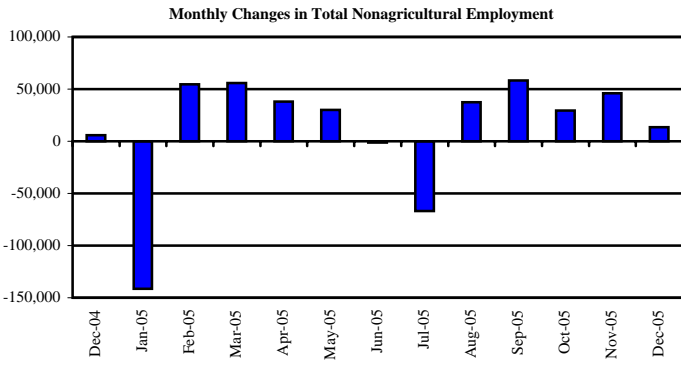


Nonagricultural Employment

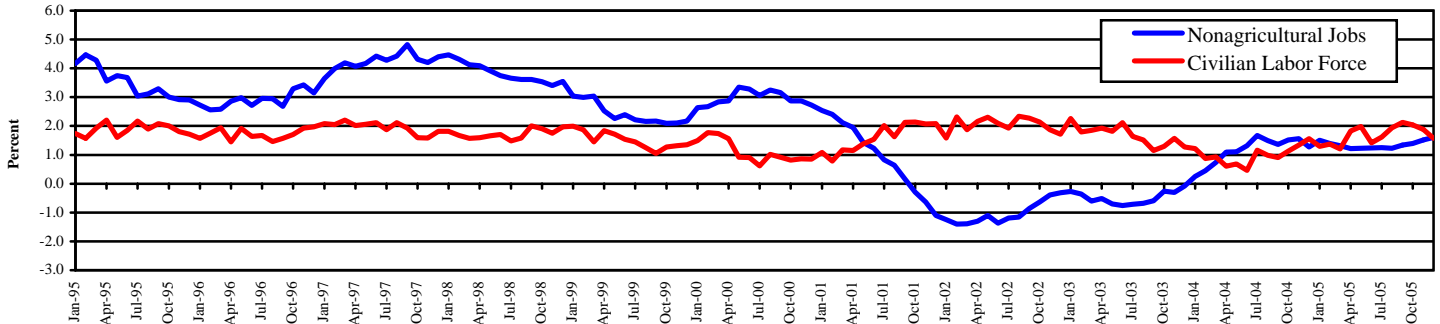


Employment by Industry	Dec-05	Nov-05	Dec-04	Monthly		Annual	
				Change	%	Change	%
Total Nonagricultural	9,739,300	9,725,800	9,585,900	13,500	0.1%	153,400	1.6%
Natural Resources and Mining	158,600	157,900	154,400	700	0.4%	4,200	2.7%
Construction	555,400	556,000	538,200	-600	-0.1%	17,200	3.2%
Manufacturing	892,800	892,100	888,100	700	0.1%	4,700	0.5%
Trade, Transportation, & Utilities	2,024,100	2,006,100	2,004,600	18,000	0.9%	19,500	1.0%
Information	232,000	232,400	226,800	-400	-0.2%	5,200	2.3%
Financial Activities	608,900	607,400	600,600	1,500	0.2%	8,300	1.4%
Professional & Business Services	1,128,300	1,127,600	1,092,400	700	0.1%	35,900	3.3%
Education and Health Services	1,186,000	1,184,700	1,161,000	1,300	0.1%	25,000	2.2%
Leisure & Hospitality	893,000	893,200	873,600	-200	0.0%	19,400	2.2%
Other Services	361,600	360,800	357,900	800	0.2%	3,700	1.0%
Government	1,698,600	1,707,600	1,688,300	-9,000	-0.5%	10,300	0.6%

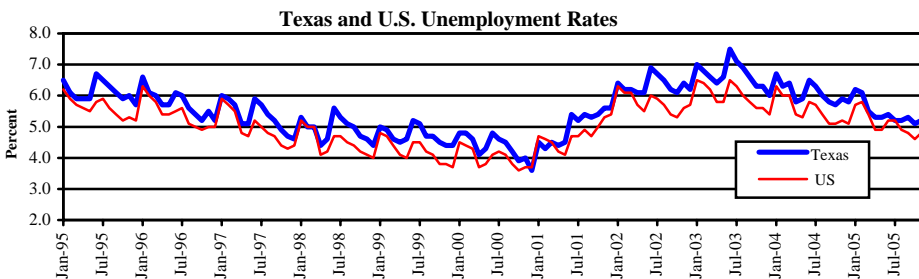
Nonagricultural Summary

Total Nonagricultural Employment increased by 13,500 jobs in December. Trade, Transportation and Utilities, Financial Activities, and Education and Health Services were the top three supersector job growth leaders. Nonagricultural jobs have increased nine out of the last eleven months in Texas. Annual job growth moved up slightly to a 1.6% rate, an overall yearly increase of 153,400 jobs.

Texas Total Nonagricultural Jobs vs. Civilian Labor Force (Over-the-Year Percent Change)



Civilian Labor Force and Unemployment Statistics



Texas Civilian Labor Force				
	Labor Force	Employment	Unemploy.	Rate
Dec '04	11,128,200	10,485,900	642,300	5.8
Jul '05	11,290,800	10,700,500	590,300	5.2
Aug '05	11,259,400	10,679,400	580,000	5.2
Sep '05	11,276,800	10,684,600	592,200	5.3
Oct '05	11,321,000	10,745,200	575,800	5.1
Nov '05	11,329,300	10,738,600	590,700	5.2
Dec '05	11,302,800	10,757,600	545,200	4.8

United States Civilian Labor Force				
	Labor Force	Employment	Unemploy.	Rate
Dec '04	147,877,000	140,278,000	7,599,000	5.1
Jul '05	151,122,000	143,283,000	7,839,000	5.2
Aug '05	150,469,000	143,142,000	7,327,000	4.9
Sep '05	149,838,000	142,579,000	7,259,000	4.8
Oct '05	150,304,000	143,340,000	6,964,000	4.6
Nov '05	150,239,000	142,968,000	7,271,000	4.8
Dec '05	149,874,000	142,918,000	6,956,000	4.6

Labor Force Summary

The Texas jobless rate dropped over the month, falling to 4.8 percent in December. December's rate was the lowest for the state since May 2001's 4.5 percent. The rate reduction was slightly more than the average decrease of three-tenths of a percentage point that typically occurs from November to December. The state unemployment rate was a full percentage point lower than last year's rate of 5.8 percent. Nationally, the United States' jobless rate declined over the month to 4.6 percent.