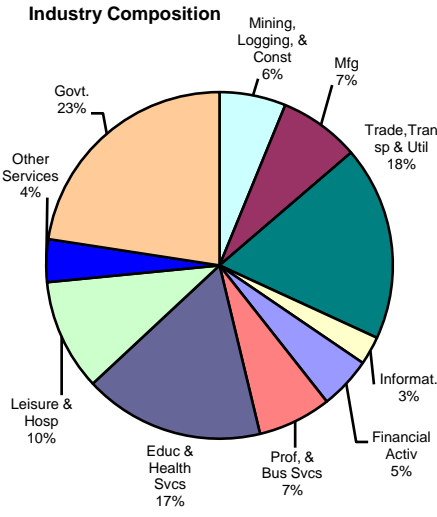
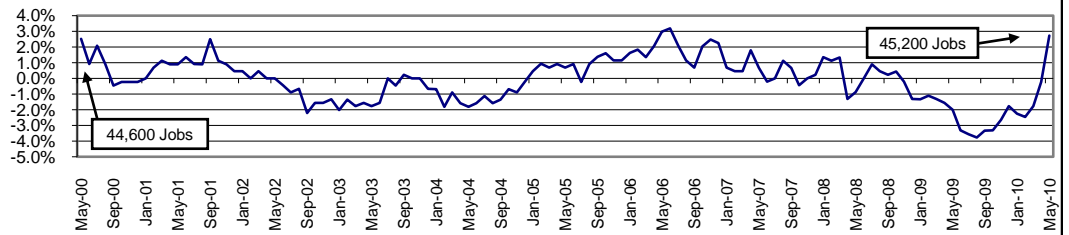


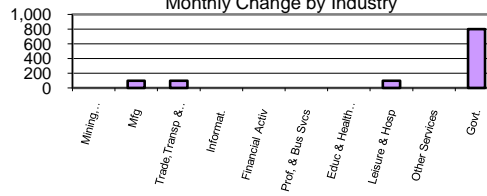
Industry Composition



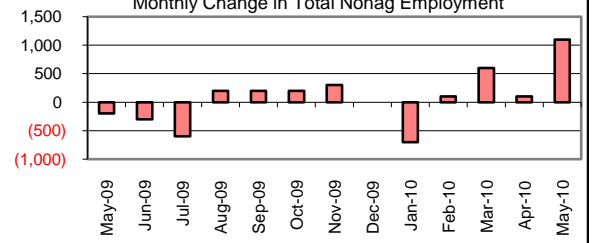
Annual Growth Rate for Total NonAgricultural Employment



Monthly Change by Industry



Monthly Change in Total Nonag Employment



Employment by Industry

	Employment			Monthly Change		Annual Change	
	May-2010	Apr-2010	May-2009	Actual	%	Actual	%
Total Nonagricultural	45,200	44,100	44,000	1,100	2.5%	1,200	2.7%
Mining, Logging, & Const	2,800	2,800	2,900	0	0.0%	-100	-3.5%
Manufacturing	3,400	3,300	3,300	100	3.0%	100	3.0%
Trade, Transp., & Utilities	8,200	8,100	8,000	100	1.2%	200	2.5%
Information	1,200	1,200	1,300	0	0.0%	-100	-7.7%
Financial Activities	2,200	2,200	2,200	0	0.0%	0	0.0%
Profes., & Business Svcs	3,100	3,100	3,200	0	0.0%	-100	-3.1%
Education & Health Svcs	7,600	7,600	7,400	0	0.0%	200	2.7%
Leisure & Hospitality	4,700	4,600	4,800	100	2.2%	-100	-2.1%
Other Services	1,800	1,800	1,800	0	0.0%	0	0.0%
Government	10,200	9,400	9,100	800	8.5%	1,100	12.1%

Size Class of Industries

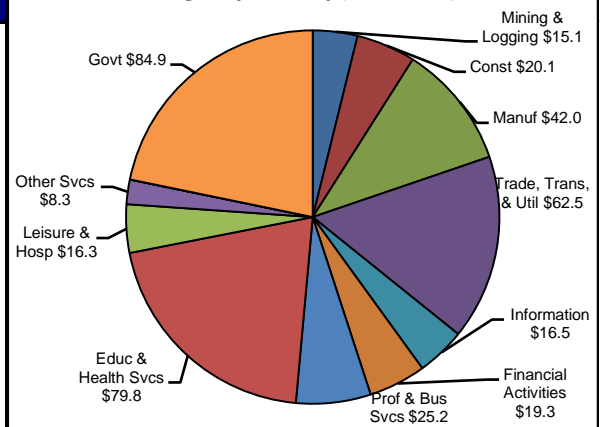
as of December 2009

Size Class	Employees Per Firm	Number of Firms	Employment in Size Class	% of Total Employment
9	1000+	3	5259	11.8%
8	500-999	10	7456	16.7%
7	250-499	10	3251	7.3%
6	100-249	40	5837	13.0%
5	50-99	77	5541	12.4%
4	20-49	255	7778	17.4%
3	10-19	305	4075	9.1%
2	5-9	456	3006	6.7%
1	1-4	1205	2549	5.7%
0	0	152	0	0.0%
TOTAL		2513	44752	100.0%

Comments for May 2010

The San Angelo MSA added 1,100 jobs over the month in Total Nonagricultural Employment. This increase was the fourth consecutive increase for the year and was the largest over-the-month increase for May in over a decade. Most of the increase was due to hiring short-term workers for the national decennial census. This month's increase brought the area's growth rate to 2.7 percent. Leisure and Hospitality added 100 jobs over the month. This increase was larger than the five-year average increase and was the third over-the-month increase for 2010. Three-hundred jobs were added since the beginning of 2010. The national decennial census contributed positively to area Federal Government employment for May. An 800-job increase was posted for the month and was easily the largest over-the-month increase for the sector in recent history. Such a large increase is temporary as employment should return to normal once the census is complete.

4th Quarter Wages by Industry (in millions)



Unemployment Information (all estimates are in thousands)

	San Angelo MSA				Texas (Actual)				United States (Actual)			
	C.L.F.	Emp.	Unemp.	% Rate	C.L.F.	Emp.	Unemp.	% Rate	C.L.F.	Emp.	Unemp.	% Rate
May-10	55.5	52.1	3.4	6.1	12,162.2	11,186.9	975.3	8.0	153,866.0	139,497.0	14,369.0	9.3
Apr-10	55.2	51.6	3.6	6.5	12,210.4	11,221.2	989.2	8.1	153,911.0	139,302.0	14,609.0	9.5
May-09	53.5	50.1	3.4	6.3	11,872.4	11,004.3	868.1	7.3	154,336.0	140,363.0	13,973.0	9.1