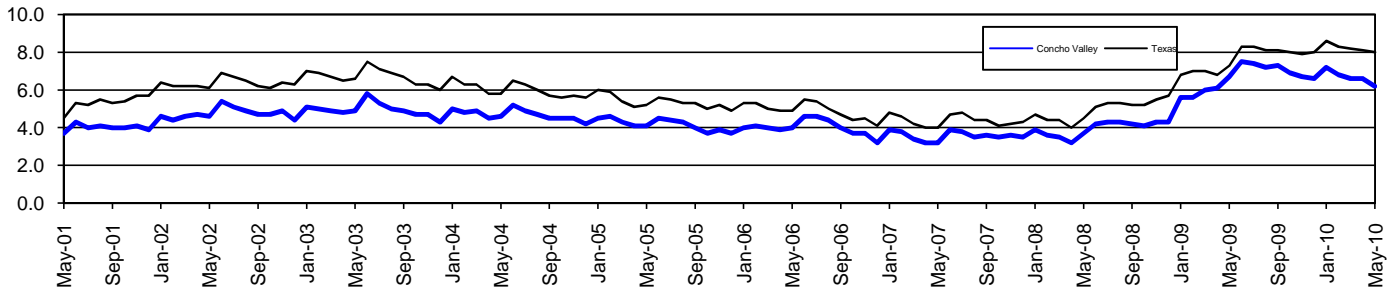


Concho Valley Workforce Development Area*

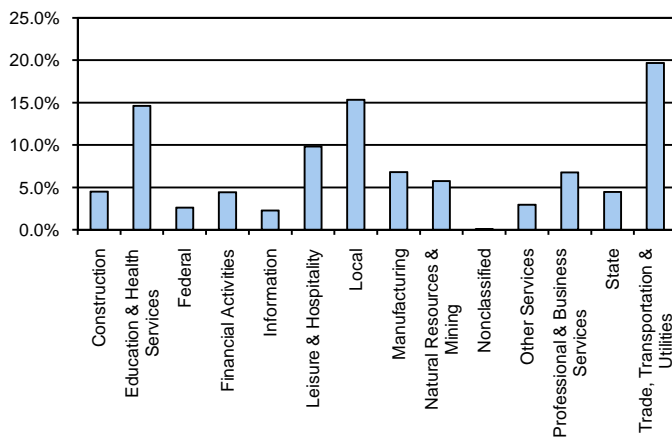
May 2010

Concho Valley WDA					Texas				
	CLF	Employed	Unemployed	Rate		CLF	Employed	Unemployed	Rate
May-10	77,372	72,543	4,829	6.2	May-10	12,162,174	11,186,911	975,263	8.0
Apr-10	77,202	72,129	5,073	6.6	Apr-10	12,210,433	11,221,189	989,244	8.1
May-09	76,286	71,191	5,095	6.7	May-09	11,872,448	11,004,314	868,134	7.3

Historical Unemployment Rates



Concho Valley WDA Industry Composition 4th Quarter 2009



Total WDA Claims

	May-10	Apr-10	May-09	OTY
Initial	313	334	601	-288
Continued	1,377	1,532	3,764	-2,387
Continued Claims for the Week of the 12th				
Continued	508	593	1,461	-953

Texas Unemployment Insurance Claims Filed

	May-10	Apr-10	May-09	OTY
Initial	88,051	96,295	115,591	-27,540
Continued	1,004,012	954,091	1,320,400	-316,388
Continued Claims for the Week of the 12th				
Continued	217,016	233,963	295,538	-78,522

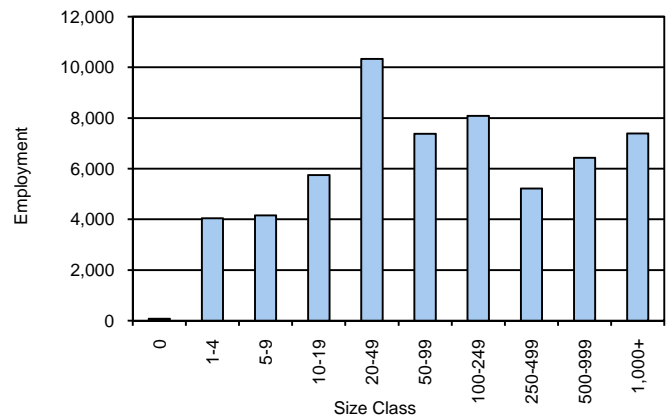
Concho Valley WDA Average Weekly Wage

	Concho Valley	WDA Qtr. Chg.	Texas
4th Quarter 2009	\$681.81	\$53.56	\$943.97
3rd Quarter 2009	\$628.25	WDA OTY Chg.	\$844.86
4th Quarter 2008	\$700.66	-\$18.85	\$932.81

NAICS Covered Employment Quarterly Data 4th Quarter 2009

SUPER SECTOR	Employment	Change	
		Quarter	Year
Construction	2,637	-43	-278
Education & Health Services	8,594	113	273
Federal	1,530	-31	77
Financial Activities	2,598	-71	-8
Information	1,340	-32	-207
Leisure & Hospitality	5,784	-196	-69
Local	9,028	509	416
Manufacturing	3,994	71	-467
Natural Resources & Mining	3,388	78	-1,336
Nonclassified	43	14	16
Other Services	1,743	-56	-92
Professional & Business Services	3,985	214	-298
State	2,620	116	-285
Trade, Transportation & Utilities	11,577	233	-764
TOTAL	58,861	919	-3,022

Size Class Employment Composition 4th Quarter 2009



*Counties in WDA: Coke, Concho, Crockett, Irion, Kimble, McCulloch, Mason, Menard, Reagan, Schleicher, Sterling, Sutton, & Tom Green